

Term 4 2019

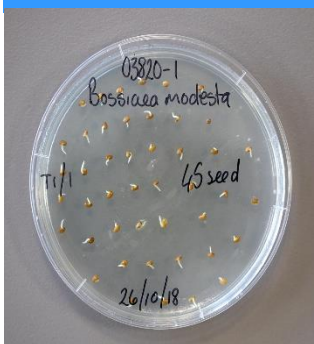
Newsletter — Week 4

29 Solandra Way, FORRESTFIELD WA 6058 ☎ 08 9453 6928

Kindy 2020
Information
Session
Friday 29th
November



A 21ST CENTURY SCHOOL



PARENT SURVEY

Next week we will start a survey of all parents and carers in our school community. It is important that we receive as many responses as possible. I have worked closely with our school board to ensure we provide our community with this opportunity to provide feedback on as many school matters as possible. We hope to receive responses from the full range of Woodlupine families. The survey will be open for four weeks.

STEP

Over the course of this year we offered STEP to our more capable students to extend their learning. Very few schools have an approach like this for their most able students. Feedback from our students has been very positive and it is beginning to show in their NAPLAN scores. We intend to continue STEP in 2020. If you would like to give feedback on STEP you will have the opportunity in the upcoming Parent Survey.

MAINTENANCE

Earlier this term we received a grant to commence minor building and maintenance work. Over the rest of the term you will see tradespeople around the school. We will try very hard to minimise disruption to learning. Hopefully our school will look even better by the end of the process.

P&C

I met with our P&C on Tuesday night. It was a very productive meeting with a very proactive, responsive and positive group. I strongly urge all parents and carers to become involved with the P&C. They are a great group of people who are committed to supporting Woodlupine students.

PLANNING FOR 2020

Over the next few weeks we will begin planning for the 2020 school year. Soon a paper note will come out asking for information regarding family movements and preferences for 2020. We encourage all families to return the note if changes are needed.

FOOD & STUDENTS

We have noticed more processed foods creeping into lunchboxes. Not only do processed foods increase anxiety they also increase misbehaviour in students with ADHD. Fresh fruit and the good old sandwich are cheaper, more nutritious foods and better for our brains.

DJILBA

1st Spring Season
(August - September)

**Music is in the
Djilba block in our
school.**

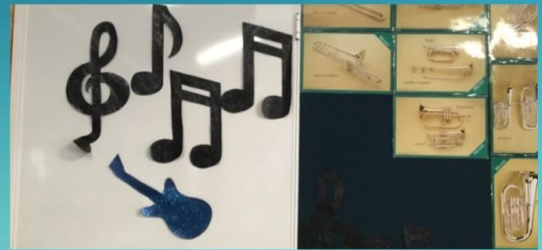
**In music, we read
notes from different
pieces of music.
After we learn how
to play it on the
keyboard, we add
our own beats to it.**



PIC•COLLAGE

Woodlupine

PRIMARY SCHOOL



Music 2019
PIC•COLLAGE

Woodlupine
PRIMARY SCHOOL



Five of the year six students are in a guitar program at school.

They learn how to play many different songs on classical guitars.



We also do choir at our school. Choir is attended by grade 3 to 6's.



The choir goes and performs for many different audiences at different places like the shopping centre and assemblies

PIC•COLLAGE

Woodlupine

PRIMARY SCHOOL



Helpful Maths Hints

Involve children in problem solving situations when they arise. For example-

"We've got the family coming for dinner tonight, how many plates will we need to set the table?" Encourage children to use counting as a strategy to get enough of something. Ask children to get a set amount of things for you. For example - "Can you get me 6 packets of jelly from the or can you pass 8 pegs from the basket."

Count orally with your children into higher numbers so they can hear the 1-9 sequence repeating itself through the decades. Count forwards and backwards by ones from any number.

Community News

Help kids connect with local sporting opportunities

Tell your community about KidSport today.



www.dlgsc.wa.gov.au/kidsport



KIDSPORT

Is your child eligible for up to \$150 towards joining a sporting club?

If your child is between 5 and 18 years and is named on a valid Health Care Card or Pensioner Concession Card, they may be eligible to receive up to \$150 per calendar year towards club fees for registered KIDSPORT clubs.

KIDSPORT wants to help children experience the benefits of participating in club sport and connecting with their community.

Visit www.dlgsc.wa.gov.au/kidsport or call us on 08 9492 9911 for more information.

Do you know any young people who are playing with fire?

DFES provides a Juvenile and Family Fire Awareness (JAFFA) program which is delivered in the family home by specially trained firefighters. JAFFA assists children in understanding fire behaviour, fire safety and the consequences of fire lighting, including legal implications. If you would like more information about JAFFA or would like to make a referral, please contact the Juvenile and Family Fire Awareness Coordinator on 9395 9488 or email jaffa@dfes.wa.gov.au.

**JUVENILE
AND FAMILY
FIRE AWARENESS
PROGRAM**

Learning through life



Woodlupine
PRIMARY SCHOOL

Woodlupine Primary School

29 Solandra Way, Forrestfield WA 6058

Tel: 9453 6928 email: Woodlupine.ps@education.wa.edu.au



Dear Parent/Carer

A Parent Information Session for Kindergarten students in 2020 will be held on Friday 29th November at 9am, in the Covered Assembly area. The Principal, Deputies, the School Nurse, a representative from the P & C, Uniform Shop and Kindy teacher will speak at the meeting.

After the meeting you and your child will have a tour of the school and visit the Kindy classroom. The Student Requirement List will be available for you on this day. You will be notified of your child's timetable by the end of the school year.

Tea and coffee is provided by the P & C and there will be lots of fun activities for you to complete with your child.

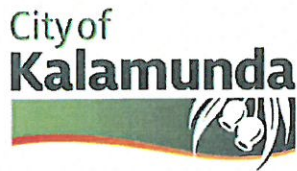
Thank you for your cooperation. We look forward to meeting you and your child.

Yours sincerely



Trevor Phoebe

PRINCIPAL



24 October 2019

Woodlupine Primary School
29 Solandra Way
FORRESTFIELD WA 6058

Dear Woodlupine Primary School

Implementation of the newly adopted Parking and Parking Facilities Local Laws 2019

Please be advised that at the Ordinary Council Meeting on 24 September 2019, the City of Kalamunda resolved to make a new Parking and Parking Facilities Local Laws.

Implementation of the Local Laws will come into effect on 25 October 2019. As a result of the review of the previous Local Laws, all fees for illegal parking have increased.

Furthermore, this notice is to advise your Parents/Guardians or Carers attending the school, that any illegal parking under the Parking and Parking Facilities Local Laws 2019, may result in a fine of up to \$100 for any offences committed.

Should you require any further information, please don't hesitate to contact the City of Kalamunda, Community Safety Services on 08 9257 9999.

Yours sincerely

Sarah Stampalia
A/Coordinator of Community Safety

kalamunda.wa.gov.au

T 9257 9999 F 9293 2715 E enquiries@kalamunda.wa.gov.au
2 Railway Road KALAMUNDA WA 6076 PO Box 42, KALAMUNDA WA 6926
ABN 60 741 095 678

HOST A JAPANESE STUDENT FOR 2 NIGHTS!

🇯🇵 4 - 6 DECEMBER 2019

Kalamunda will be welcoming Japanese high school students from Oita and Fukuoka, and the opportunity to host them is open to you!

We are looking for great families in Kalamunda and surrounding areas to host **two wonderful students** and be a part of this unique experience with us.

WHY HOST?



24 HOUR SUPPORT

We offer 24 hour bilingual support, a visit from our Homestay Facilitator to answer all your questions in person, and have a bilingual School Coordinator present each day at the hosting school.



HOST PAYMENT

We provide a payment to contribute towards the students' living costs.



EXPERIENCE

Invite culture into your home. Allow your family to form meaningful bonds and develop communication skills that crosses borders.



"Love seeing the smiles on children's faces as they learn more and more from both cultures. The hard part is saying goodbye for now. We have tears, but memories forever!"

- Cifelli Family



"What an adventure we had with our Japanese exchange student! The whole process was **smooth, easy and effortless**. This was our first time hosting and we would definitely be interested in doing it again!"

- Withers Family



Start your online application today at www.goldil.com.au

WANT TO KNOW MORE? CONTACT US: 08 9444 7687 • 0438 871 451 • HOMESTAY@GOLDIL.COM.AU



Woodlupine

PRIMARY SCHOOL