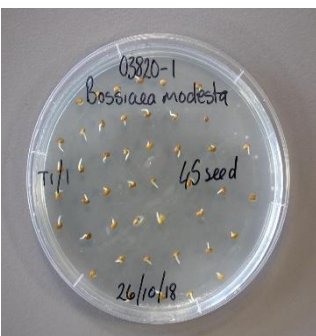


2 August 2019

Term 3, Week 2

WOODLUPINE PRIMARY SCHOOL NEWSLETTER

A 21ST CENTURY SCHOOL



SPORTS OPPORTUNITIES

At Woodlupine we believe that participation in sport helps children learn how to win, or lose, with good grace. This term we have an amazing range of opportunities for our students to experience the benefits of sporting competition. Today we have a number of children competing in an interschool Futsal competition. Next Friday we will have our interschool winter carnival, postponed from last term. In week seven we will hold our annual house athletics carnival. In week nine the interschool athletics carnival will be held at High Wycombe Primary School

ARTS OPPORTUNITIES

We have many students who have significant creative talents. To provide opportunities for those students to develop and showcase those talents we have developed a partnership with Hawaiian's Forrestfield Shopping Centre. This term our choir will perform at the shopping centre on the **12th of September** and again on the **4th of December**. We will also have an arts display at the shopping centre that week.

STEM LEARNING

Our STEM students have a number of great opportunities this term. Miss Jane continues to run Coding Clubs on Wednesdays for students to learn about coding digital technologies. On Thursdays Miss Jane, assisted by Mr Ashley Barker, runs robotics classes with our senior students. Mr Barker is a parent in our school community. We thank him sincerely for giving up his time to help us out with his robotics expertise.

Mrs Pescodd has arranged for two guest speakers this term to talk to students in the STEM Lab about geology and careers in Science as they study Earth and Space Science this term.

IMPROVING COMMUNICATION

In an effort to improve communication, we will publish hard copies of our newsletter every fortnight on the pinup boards around the school. While we are committed to reducing paper usage, producing a small number of paper copies may help us to communicate with parents who may not be able to access our new website.

NUT AWARE SCHOOL

Woodlupine Primary School tries very hard to ensure we provide a safe and caring environment for all children. Given the number of foods which may contain traces of nuts, it is not possible for schools to say for certain that they are 'nut-free'. It is better for the school community to become aware of the risks associated with anaphylaxis and to implement practical, age appropriate strategies to minimise exposure to known allergens.

To support our community in increasing its understanding of anaphylaxis; posters, fact sheets and brochures can be downloaded from the Western Australian Department of Health - Anaphylaxis website below.

www.health.wa.gov.au/anaphylaxis.

THANK YOU

I would like to take this opportunity to publicly thank, on behalf of Woodlupine Primary School, the following members of our school community for their generous support.

Mr Rodney Bruce recently serviced, repaired, painted and supplied new safe grip handles to our three scooters and two bikes in Kambarang Block. Our junior students, and staff, are extremely grateful to Mr Bruce for taking the time, effort and expense to ensure our children are able to play actively and safely on bikes in the playground.

Mrs Carlene Humfrey donated recyclable/reusable materials for use in our canteen. We have already used some for popcorn and drinks at our Term Three Reward activity. We plan to use more of these materials in craft activities in the classroom over the course of this semester.

We feel very fortunate to have such generous and supportive community members.



BOARD MEETING

The Board met on Thursday 1st August to discuss a number of key issues including student attendance, school finances, Curriculum Improvement and the new Strategic Plan.

The Board formally adopted the 2019 – 2012 Strategic Plan. A copy can be found on our new website.

The Board was pleased to note the increasing enrolments and improving attendance figures provided. Mrs Pescodd provided numeracy data from the last term's STEP program indicating many students had made exceptional progress.

Warm regards
Trevor Phoebe, Principal

Design & Technologies in Room 12

We designed, made and evaluated a scene from our favourite book. We got to use shoe boxes, card, paint, glitter, pop sticks, pom poms, corks, PVA glue and the hot glue gun. We had to be very careful with the hot glue gun or you could get burnt fingers. We enjoyed making our dioramas!



Earth and Space in Room 12

Last Friday, students in Room 12 enjoyed an afternoon exploring the planets in our solar system as an introduction to our Earth and Space topic for science this term.

Students learnt the names of each planet and placed them in order from closest to furthest from the sun. Ask your child about the mnemonic device we used to correctly order the planets 😊

We then had fun outside exploring the relative size of the planets and using rolls of paper to get an idea of their distance from the sun.





Are you looking for a Pre-Kindy program that allows you to stay with your child and participate in their learning?

Introducing...

STAY AND PLAY

Pre-Kindy



Woodlupine Family Centre in Forrestfield is excited to introduce a new program in Semester 2 2019 facilitated by our Educator, Penny Adams.

Our play-based program encourages children to become curious participants in their education. Each child requires 1 parent/carer in attendance.

- Learning Outcomes
- Behaviours to encourage a smooth transition to our kindy program
 - Following prompts and directions from the Teacher
 - Music, movement and language skills
 - Interact with peers and Teachers
 - Independence skills
 - Taking turns and sharing skills



Age Range: Children from 2.5 years of age

(Babies under 6 months are welcome to attend with their sibling at no charge)

When: Each Tuesday between 9.30am - 11.30am during term time

Tuesday 30th July – Tuesday 24th September

Cost: \$135 per term, per child

Places are limited, so please contact our Centre Manager to secure your child's position.

88 Hale Road, Forrestfield

(Just off Woolworths Drive, behind the Community Centre)



Centre Manager: Tanya on 08 9359 1155



woodlupine-fc@bigpond.com